



Washington Pools  
 1660 London Line, Sarnia  
 519-336-3434  
 kelly@washingtonpools.ca

**Hot Tub water test performed for :**

Washington: 519-336-3434 @ 1660 London Line, Sarnia, Ontario, N7T7H2

Hot Tub Info		
Volume: 750 Litre		
Acrylic/Thermoplastic		
Water Test Information		
Date: 2024-05-03		
Test Type: Fresh Fill		
Algae/Biofilm: No		
Turbidity/Cloudy: No		
Temp.: 38.00 °C		
TDS: 100 ppm		
System Used: Botanical System		
Sanitizer: Chlorine		
Total	Free	Ideal(ppm)
0.9	0.9	3-5
pH: 7.5		7.4 - 7.6
Actual(ppm)	Ideal(ppm)	
CYA: 0	<100	
TA: 70	125-150	
Ca: 70	100-200	
Cu: 0.0	0	
Fe: 0.0	0	
Mn: 0.0	0	
Po: 0 ppb	0 ppb	

**Steps to Take Following Fresh Fill**

Your Saturation Index is -0.40. **Saturation Index** is an overall measure of water balance. The acceptable range is -.5 to +.5. Outside this range can lead to corrosion or scale-formation. Follow the detailed instructions below to correct any individual water balance issues and/or resolve other hot tub water problems. Read product label directions carefully before using any recommended product.

**Step 1: Add 281 mL of Dazzle Stain & Scale 1 initially.**

**Step 2: Balance Water as per Water Balance section.**

**Add 110 gms of Dazzle Alkalinity Plus. Wait 1 Hour.**

6 1/2 Tbsp / 2 Caps Balance Pak 100

**Add 3 gms of Dazzle pH Minus. Wait 1 Hour.**

1/2 Tsp / Lo 'n Slo

**Add 60 gms of Dazzle Calcium Plus. Wait 3 Hours.**

3 TBSP / 1 Cap Balance Pak 300

**Step 3: Add 17 gms of Dazzle Amaze Plus weekly.**

1 Spa lite / 2/4 Cap

Check sanitizer levels and add as needed.

**Step 5: Add 56 mL of Dazzle Botanical Cleanse weekly.**

9 Tbsp / 3 Caps Optimizer plus

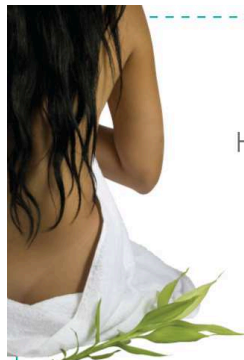
**Step 6: Add 150 gms of Dazzle Performance Plus initially.**

**Step 7: Add 15 mL of Dazzle Nature Sheen initially.**

**General Product Application Instructions:**

Refer to label directions for each product to be added.  
 Always add products sparingly and evenly across the water surface.  
 Always add products with the pump running and the aeration off.  
 Follow proper wait times between additions for best results.

© 2008-2024  
 Backyard Brands Inc.  
 All Rights Reserved  
[www.DazzleWaterCare.com](http://www.DazzleWaterCare.com)  
[www.dazzlewatercare.com](http://www.dazzlewatercare.com)



Buh bye scary potions,  
 hello healthy and luxurious water!

Hot tub water care can be complicated  
 at times... but not with **Mineraluxe!**

Hot tub care has never been easier.

**mineraluxe**<sup>TM</sup>  
 ADVANCED HOT TUB WATER CARE